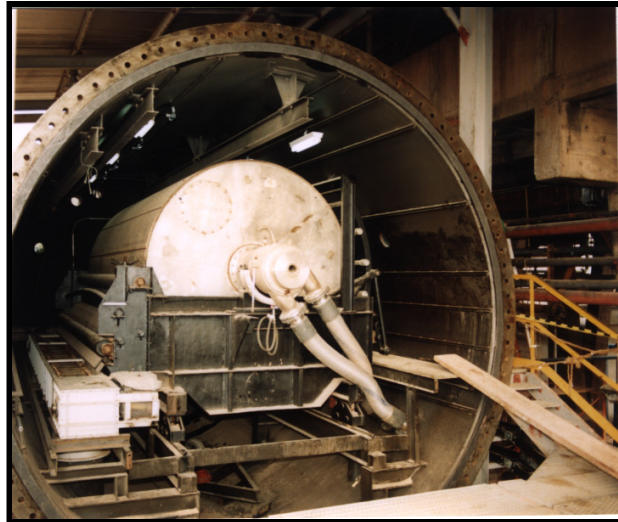


## Continuous Pressure and Steam Pressure Filtration

### **Main Characteristics:**

- continuous filtration with disc or drum filters inside a pressure vessel
- use of compressed air for filtration
- special (patented) steam cabin for steam pressure filtration
- closed and hermetic system
- all drive units inside the vessel
- cake discharge by air blow-back
- reliable sluice technology for discharging of cake out of vessel
- max. pressure difference: 6 bar
- filter speed: 0.2 to 5 rpm
- filtration area of drum filters up to 81 m<sup>2</sup>
- filtration area of disc filters up to 168 m<sup>2</sup>



Hi-Bar Filtration is the most advanced continuous pressure filtration process realised on rotary disc and drum filters that are installed inside a pressure vessel filled with compressed air. The process and plant design has been realised based on the rich know how and practical filtration experience of BOKELA. The modern (patented) steam pressure filtration combines the physics of a mechanical dewatering and a thermal drying process. For Hi-Bar steam pressure filtration the rotary filter (disc or drum) is equipped with a special steam cabin forming a small extra process room inside the vessel. Hi-Bar steam pressure filtration enables very low residual cake moistures as well as many other benefits like: reduced gas throughput, very advantageous energy balance, extraction of solid contents and excellent filter cake washing. Preliminary tests can be carried out either in lab and pilot scale with the BOKELA test equipment.

### **Range of Application:**

- bauxite
- coal
- iron ore
- copper concentrate
- lead concentrate
- zinc concentrate
- red mud
- white/colour pigments
- precipitated crystals
- salts
- starches
- wheat
  - potato
  - tapioca
- etc.

